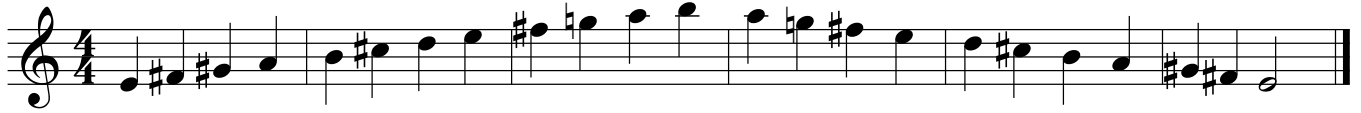


Adonai Molokh - E

Klezmer mode played in secular forms and in the Synagogue



Obtaining Adonai Molokh mode from Major (ionian) scales.
We will use an A Major scale to transpose into an Adonai Molokh scale.

A Major scale
A B C# D E F# G# A

Arrange the A Major scale into its Mixolydian mode.

Underlined 5th scale degree
A B C# D E F# G# A

Spell out the A Major on the 5th from E to E for its relative Mixolydian mode

E Mixolydian scale
E F# G# A B C# D E

Spelling out an Adonai Molokh scale with a Mixolydian scale

10th scale degree lowered to minor
E F# G# A B C# D E F# G♭

E Adonai Molokh scale
E F# G# A B C# D E F# G♭

Quick examples from Major to Adonai Molokh mode listed below

C Major scale
Ex-1: C D E F G A B C

G Mixolydian
G A B C D E F G

G Adonai Molokh scale
G A B C D E F G A B♭

D♭ Major scale
Ex-2: D♭ E♭ F G♭ A♭ B♭ C D♭

A♭ Mixolydian
A♭ B♭ C D♭ E♭ F G♭ A♭

A♭ Adonai Molokh scale
A♭ B♭ C D♭ E♭ F G♭ A♭ B♭ C♭

E Major scale
Ex-3: E F# G# A B C# D# E

B Mixolydian
B C# D# E F# G# A B

B Adonai Molokh scale
B C# D# E F# G# A B C# D♭